



Sheds, Workshops, Potting Sheds & Greenhouses

 the  
**malvern**  
collection

**HANDMADE IN WORCESTERSHIRE FOR OVER 50 YEARS**



# welcome to

## The Malvern Collection

In the early 1970s, we started to design and produce garden buildings at our factory in Worcestershire. All of our buildings

are made to order and handcrafted using traditional carpentry techniques by skilled craftsmen, which are then delivered and installed by our own teams of experienced fitters across the country.

The Malvern Collection design and make a wide collection of buildings, from the humble shed right through to fully lined, insulated and double glazed garden rooms and offices designed for all year round use. We offer a wide selection of optional extras which enable you to create your ideal garden room to meet not only your practical needs but also your own personal taste.

Our paint spraying shop is one of the most advanced spraying and drying facilities in the garden building industry, where buildings can be coated with a highly durable and weather resistant, low maintenance paint and primer system, which will protect and enhance your building.

At Malvern, we use only the highest quality materials from sustainable sources. Our redwood buildings are constructed using kiln dried slow grown pine from Sweden's Northern sawmills and our cedar buildings are constructed using Canadian Western Red kiln dried cedar.

We strongly recommend that you visit one of our display sites where you can examine for yourself the quality, design and materials used in the manufacture of our buildings. Experienced staff will be on hand to discuss your individual requirements.

Over **50** years  
of history.

- 1972** In a converted chicken shed on a farm in Worcestershire, Pound Garden Buildings was born, making and selling sheds and summerhouses, selling through a network of agents across the country
- 1994** After 20 years of trading, the company changed its name to Midland Portable Buildings, known in the industry as MPB and the business continued to expand.
- 1998** The Company invested heavily in a new 8,000 square-foot, modern window and door production facility, using the latest woodworking machines to produce some of the highest quality doors and windows in the industry.
- 2002** "The Malvern Collection". A rebrand is undertaken, and the new trading name is established providing the foundations for our business today.
- 2004** The introduction of our "hand sprayed" buildings. Our paint spraying shop is one of the most advanced spraying and drying facilities in the garden building industry.
- 2025** Today our factory occupies a four acre site and employs 150 people, including teams of experienced installers, producing the most comprehensive range of garden buildings in the industry, displayed throughout the country on multiple established show sites.

# experts in

## materials & craftsmanship

Handmade in our factory for over 50 years, all Malvern Collection garden buildings are made to order combining age-old techniques, time-honoured joinery practices with modern woodworking machinery.

The premium quality materials used throughout our manufacturing process will ensure enjoyment of your Malvern Collection building for years to come.

At The Malvern Collection we are passionate about making garden buildings, and proud to be manufacturing the most comprehensive collection of buildings available in the UK today, many of which are on display throughout top garden centre show sites across the country.



# **SHEDS**

## **MALVERN** **HEAVY DUTY REVERSE APEX**





**At Malvern we take sheds very seriously, producing the most versatile and comprehensive range of sheds and options available today.**

The Malvern Heavy Duty shed has been designed and built to the highest of standards, using only quality materials. A shed which has been built to last a lifetime!

Constructed using heavy duty framing and bracing, our sheds are robust, sturdy and structurally very strong. All our Malvern Heavy Duty sheds have a tongue and groove heavy duty floor, machined out of 25mm timber boards, fitted as standard.

Our Malvern sheds have a choice of five exterior claddings, Heavy Duty Redwood, Heavy Duty Pressure Treated, 23mm Heavy Duty Redwood Barnstyle, 23mm Heavy Duty Pressure Treated Barnstyle and Western Red Cedar tongue and groove shiplap cladding.

Malvern Heavy Duty sheds come with an unprecedented choice of eight different roof finishes, from heavy duty polyester mineral felt through to cedar shingles.

The construction of our Malvern sheds is completed by handmade fully framed, ledged and braced doors, each door then being hung with three heavy duty hinges. A three lever mortice lock is fitted as standard.

Joinery made lockable windows are fitted to our Malvern Heavy Duty sheds, and can be upgraded to Georgian style windows. Double glazed windows are also available as an option.

If required there is an option to fully insulate your Malvern shed and line the interior with tongue and groove redwood cladding. Finally, we can also add one of our many durable paint finishes which will enhance and personalise the look of your shed even further. All installed by our experienced team of professional fitters.

The Malvern shed, a premium range of quality, strong, elegant and attractive sheds, perfect for any garden setting.

# SHEDS

# MALVERN

HEAVY DUTY REVERSE APEX



14' x 8' Malvern Heavy Duty Reverse Apex with Tidystore



14' x 8' Malvern Heavy Duty Reverse Apex





12' x 10' Malvern Heavy Duty Reverse Apex



14' x 10' Malvern Heavy Duty Reverse Apex

## STANDARD FEATURES

- All ridge heights under 2.5m
- Heavy duty framework throughout
- Additional diagonal framework for extra rigidity and strength
- Heavy duty floor
- Pressure treated floor joists
- Tongue and groove timber roof and floor
- Polyester mineral felt – available in green, black or red
- Fully framed, ledged and braced single door
- 3 lever mortice lock
- 3 heavy duty hinges per door
- Security screws in hinges
- Single glazed 4mm toughened glass
- Black or chrome ironmongery - please specify at time of order
- Joinery made fixed and lockable opening windows
- High quality timber treatment applied throughout prior to delivery (excluding pressure treated)
- A wide range of sizes to choose from

## OPTIONS

- A choice of Heavy Duty Redwood, Heavy Duty Pressure Treated, Heavy Duty Redwood Barnstyle, Heavy Duty Pressure Treated Barnstyle or Western Red Cedar cladding
- Higher pitch roof
- Coloured painted finish – wide selection of colours
- Black highlights – window frames and fascias painted black, no cost upgrade but must be specified on the order
- Bitumen mineral roof felt tiles, available in green, red or black
- Onduline roof
- Pressure treated slatted roof
- Slate effect roof tiles - a choice of 3 colours available
- Cedar slatted roof
- Pressure treated cedar shingle roof
- Double glazing (excluding Georgian)
- Tongue and groove timber lining plus insulation
- Internal partition walls
- High level security fixed windows in lieu of opening at no additional cost
- Georgian style windows
- Window in door, plain or Georgian
- Integral Tidystore, 0.91m (3') wide unless specified otherwise
- Integral open sided area
- Composite decking upgrade to open area
- Hook and band hinges
- Security pack including 6 pin lock and security screws
- Guttering and downpipe in a choice of three colours
- Heavy duty workbenches and shelves
- Double door upgrade
- A set of pressure treated floor bearers

# WINDOW AND DOOR CONFIGURATIONS

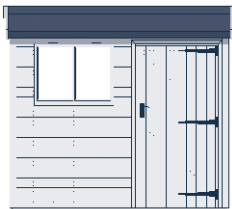
These layouts can be altered to suit your own individual requirements.



1.83m (6')



2.13m (7')



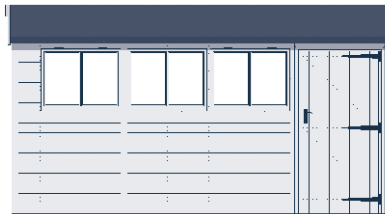
2.44m (8')



3.05m (10')



3.66m (12')



4.27m (14')



4.88m (16')



5.49m (18')



6.10m (20')

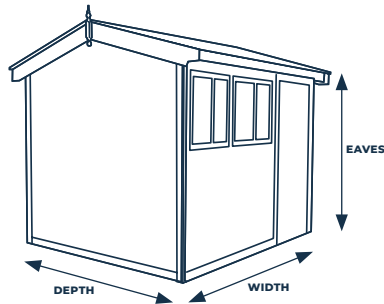
# SHEDS

# MALVERN

## HEAVY DUTY REVERSE APEX

Size		External Cladding					Coloured Painted Finish	Tongue & Grooved Lining & Insulation
Size w x d (m)	Size w x d (ft)	19mm Tongue & Groove Redwood	19mm Tongue & Groove Pressure Treated Redwood	23mm Barnstyle Redwood	23mm Barnstyle Pressure Treated Redwood	12mm Tongue & Groove Cedar		
2.44 x 1.83	8' x 6'	2,265	2,490	2,265	2,490	5,200	1,635	1,690
3.05 x 1.83	10' x 6'	2,875	3,160	2,875	3,160	6,260	1,850	1,985
3.66 x 1.83	12' x 6'	3,055	3,365	3,055	3,365	6,715	2,045	2,290
4.27 x 1.83	14' x 6'	3,595	3,955	3,595	3,955	7,260	2,285	2,540
4.88 x 1.83	16' x 6'	4,005	4,405	4,005	4,405	7,810	2,535	2,805
3.05 x 2.44	10' x 8'	3,405	3,745	3,405	3,745	7,260	2,100	2,355
3.66 x 2.44	12' x 8'	3,650	4,010	3,650	4,010	7,780	2,315	2,635
4.27 x 2.44	14' x 8'	4,105	4,515	4,105	4,515	8,570	2,510	2,955
4.88 x 2.44	16' x 8'	4,480	4,925	4,480	4,925	9,250	2,705	3,265
5.49 x 2.44	18' x 8'	4,875	5,360	4,875	5,360	9,950	2,920	3,550
6.10 x 2.44	20' x 8'	5,245	5,770	5,245	5,770	10,650	3,145	3,840
3.05 x 3.05	10' x 10'	4,070	4,475	4,070	4,475	8,300	2,415	2,710
3.66 x 3.05	12' x 10'	4,420	4,865	4,420	4,865	8,920	2,575	3,025
4.27 x 3.05	14' x 10'	4,995	5,490	4,995	5,490	9,830	2,785	3,515
4.88 x 3.05	16' x 10'	5,445	5,990	5,445	5,990	10,640	3,000	3,675
5.49 x 3.05	18' x 10'	5,915	6,510	5,915	6,510	11,370	3,310	3,950
6.10 x 3.05	20' x 10'	6,430	7,075	6,430	7,075	12,130	3,560	4,190
3.66 x 3.66	12' x 12'	4,905	5,400	4,905	5,400	9,835	2,830	3,515
4.27 x 3.66	14' x 12'	5,535	6,090	5,535	6,090	10,815	3,055	3,720
4.88 x 3.66	16' x 12'	6,020	6,620	6,020	6,620	11,665	3,310	4,110
5.49 x 3.66	18' x 12'	6,540	7,195	6,540	7,195	12,440	3,560	4,460
6.10 x 3.66	20' x 12'	7,135	7,850	7,135	7,850	13,380	3,845	4,785

FOR HIGH PITCH VERSION - ADD 10% TO BUILDING AND ANY ADDITIONAL ROOF OPTION



MALVERN HEAVY DUTY REVERSE APEX			
Depth	External		
	Ridge		Eaves
	Low	High	
1.83m (6')	2.33m	2.51m	2.04m
2.44m (8')	2.41m	2.65m	
3.05m (10')	2.43m	2.79m	
3.66m (12')	2.49m	2.94m	
Depth	Internal (unlined)		
	Ridge		Eaves
	Low	High	
1.83m (6')	2.20m	2.43m	2.02m
2.44m (8')	2.29m	2.57m	
3.05m (10')	2.29m	2.71m	
3.66m (12')	2.35m	2.85m	

	Roof Options						Floor Bearers	Installation
	Double Glazing	Bitumen Felt Roof Tiles	Onduline Roof	Pressure Treated Slatted Roof	Cedar Slatted Roof	Cedar Shingle Roof		
115	620	630	700	1,340	1,795	1,795	125	190
230	770	790	850	1,685	2,235	2,235	135	230
230	935	960	1,015	2,030	2,670	2,670	140	250
345	1,070	1,095	1,185	2,350	3,100	3,100	145	270
345	1,245	1,265	1,365	2,670	3,545	3,545	155	300
230	975	1,000	1,015	2,060	2,660	2,660	155	315
230	1,155	1,185	1,185	2,430	3,190	3,190	175	340
345	1,330	1,360	1,380	2,825	3,705	3,705	210	385
345	1,490	1,525	1,620	3,205	4,230	4,230	230	430
345	1,730	1,765	1,850	3,625	4,745	4,745	255	470
345	1,905	1,945	1,955	4,035	5,265	5,265	280	525
230	1,150	1,180	1,185	2,380	3,110	3,110	210	480
230	1,365	1,390	1,415	2,890	3,670	3,670	230	555
345	1,580	1,615	1,620	3,170	4,275	4,275	255	630
345	1,805	1,850	1,865	3,670	4,875	4,875	280	700
345	2,035	2,075	2,090	4,130	5,470	5,470	300	775
345	2,240	2,295	2,320	4,570	6,070	6,070	330	850
230	1,555	1,595	1,620	3,170	4,260	4,260	265	595
345	1,860	1,895	1,895	3,700	4,845	4,845	290	670
345	2,110	2,155	2,180	4,180	5,540	5,540	330	750
345	2,340	2,385	2,510	4,670	6,230	6,230	355	825
345	2,595	2,650	2,785	5,210	6,915	6,915	380	890

Additional Windows	Fixed/Security		Opening	
	Single Glazed	Double Glazed	Single Glazed	Double Glazed
Standard Redwood	120	240	165	285
Standard Pressure Treated	125	250	170	295
Standard Cedar	180	305	230	355
Georgian Redwood	240	-	280	-
Georgian Pressure Treated	245	-	285	-
Georgian Cedar	335	-	380	-

Single Malvern Door or Double Door in lieu of single	
Redwood	365
Pressure Treated/Barnstyle	420
Cedar	545

Additional Window in Door	Single Glazed	Double Glazed
Standard Redwood	120	240
Standard Pressure Treated	125	250
Standard Cedar	180	305
Georgian Redwood	240	-
Georgian Pressure Treated	245	-
Georgian Cedar	335	-

Other Options	1.22m (6')	2.44m (8')	3.05m (10')	3.66m (12')
Redwood Partition	290	410	605	770
Pressure Treated Partition	345	470	700	875
Cedar Partition	680	940	1305	1640

Stable Door Conversion in lieu of standard	160
--	-----

0.23m (9") Wide Shelf	65 per running metre
0.38m (15") Wide Shelf	85 per running metre
0.38m (15") Wide Workbench	85 per running metre
0.61m (24") Wide Workbench	105 per running metre
Guttering per side	65 per running metre
Composite Decking Upgrade	280 per square metre

Hook & Band Hinges	55 per door
Security Pack for Doors	210

Malvern Apex Reverse Width	2.44m (8')	3.05m (10')	3.66m (12')	4.27m (14')	4.88m (16')	5.49m (18')	6.10m (20')
Georgian Upgrade Single Glazed Windows	155	305	305	455	455	455	455

Malvern Apex Reverse Depth - Integral Tidystore	1.83m (6')	2.44m (8')	3.05m (10')	3.66m (12')
Redwood	255	335	420	495
Pressure Treated/Barnstyle	300	395	495	565
Cedar	675	910	1,180	1,380

# SHEDS

# MALVERN HEAVY DUTY APEX



12' x 10' Malvern Heavy Duty Apex with Logstore



12' x 10' Malvern Heavy Duty Apex



8' x 6' Malvern Heavy Duty Apex



8' x 10' Malvern Heavy Duty Apex



12' x 10' Malvern Heavy Duty Apex

## STANDARD FEATURES

- All ridge heights under 2.5m
- Heavy duty framework throughout
- Additional diagonal framework for extra rigidity and strength
- Heavy duty floor
- Pressure treated floor joists
- Tongue and groove timber roof and floor
- Polyester mineral felt – available in green, black or red
- Fully framed, ledged and braced single door
- 3 lever mortice lock
- 3 heavy duty hinges per door
- Security screws in hinges
- Single glazed 4mm toughened glass
- Black or chrome ironmongery - please specify at time of order
- 0.23m (9") roof overhang above doors
- Joinery made fixed and lockable opening windows
- High quality timber treatment applied throughout prior to delivery (excluding pressure treated)
- A wide range of sizes to choose from

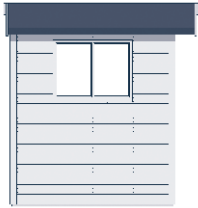
## OPTIONS

- A choice of Heavy Duty Redwood, Heavy Duty Pressure Treated, Heavy Duty Redwood Barnstyle, Heavy Duty Pressure Treated Barnstyle or Western Red Cedar cladding
- Higher pitch roof
- Coloured painted finish – wide selection of colours
- Black highlights – window frames and fascias painted black, no cost upgrade but must be specified on the order
- Bitumen mineral roof felt tiles, available in green, red or black
- Onduline roof
- Pressure treated slatted roof
- Slate effect roof tiles - a choice of 3 colours available
- Cedar slatted roof
- Pressure treated cedar shingle roof
- Double glazing (excluding Georgian)
- Tongue and groove timber lining plus insulation
- Internal partition walls
- High level security fixed windows in lieu of opening at no additional cost
- Georgian style windows
- Window in door, plain or Georgian
- Additional 0.91m (3') Logstore to side
- Integral open sided area
- Composite decking upgrade to open area
- Hook and band hinges
- Security pack including 6 pin lock and security screws
- Guttering and downpipe in a choice of three colours
- Heavy duty workbenches and shelves
- Double door upgrade
- No roof overhang over doors
- A set of pressure treated floor bearers

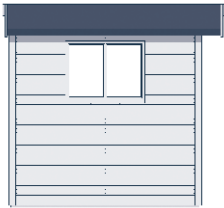


# WINDOW CONFIGURATIONS

These layouts can be altered to suit your own individual requirements.



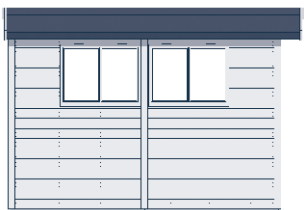
1.83m (6')



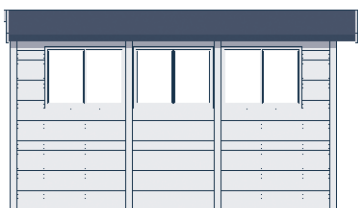
2.13m (7')



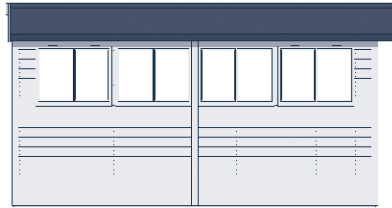
2.44m (8')



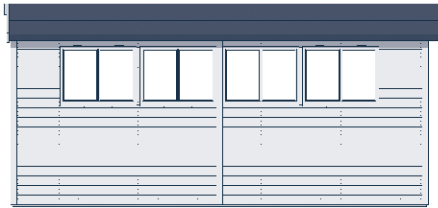
3.05m (10')



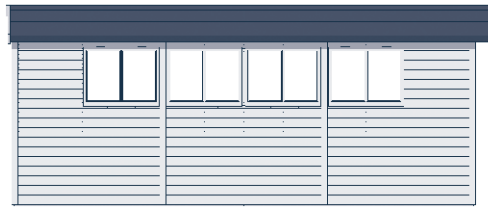
3.66m (12')



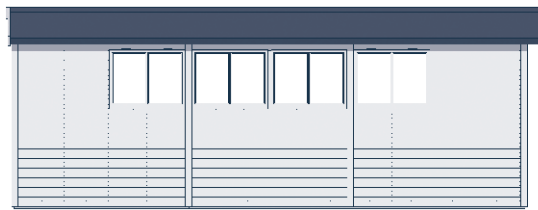
4.27m (14')



4.88m (16')



5.49m (18')



6.10m (20')

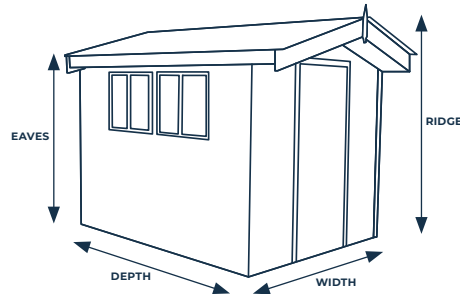
# SHEDS

# MALVERN

## HEAVY DUTY APEX

Size		External Cladding					Coloured Painted Finish	Tongue & Grooved Lining & Insulation
Size d x w (m)	Size d x w (ft)	19mm Tongue & Groove Redwood	19mm Tongue & Groove Pressure Treated Redwood	23mm Barnstyle Redwood	23mm Barnstyle Pressure Treated Redwood	12mm Tongue & Groove Cedar		
1.83 x 1.22	6' x 4'	1,580	1,735	1,580	1,735	3,960	1,215	1,165
2.13 x 1.52	7' x 5'	1,950	2,150	1,950	2,150	4,715	1,415	1,415
1.83 x 1.83	6' x 6'	1,985	2,180	1,985	2,180	5,055	1,440	1,440
2.44 x 1.83	8' x 6'	2,380	2,620	2,380	2,620	5,380	1,635	1,690
3.05 x 1.83	10' x 6'	2,875	3,160	2,875	3,160	6,260	1,850	1,985
3.66 x 1.83	12' x 6'	3,175	3,495	3,175	3,495	6,900	2,045	2,290
2.44 x 2.44	8' x 8'	3,040	3,350	3,040	3,350	6,565	1,895	2,035
3.05 x 2.44	10' x 8'	3,405	3,745	3,405	3,745	7,260	2,100	2,355
3.66 x 2.44	12' x 8'	3,770	4,145	3,770	4,145	7,970	2,315	2,635
4.27 x 2.44	14' x 8'	4,225	4,645	4,225	4,645	8,750	2,510	2,955
4.88 x 2.44	16' x 8'	4,600	5,060	4,600	5,060	9,430	2,705	3,265
3.05 x 3.05	10' x 10'	4,070	4,475	4,070	4,475	8,300	2,415	2,710
3.66 x 3.05	12' x 10'	4,540	5,000	4,540	5,000	9,105	2,575	3,025
4.27 x 3.05	14' x 10'	5,110	5,625	5,110	5,625	10,010	2,785	3,515
4.88 x 3.05	16' x 10'	5,565	6,120	5,565	6,120	10,820	3,000	3,675
5.49 x 3.05	18' x 10'	6,035	6,640	6,035	6,640	11,555	3,310	3,950
3.66 x 3.66	12' x 12'	5,025	5,525	5,025	5,525	10,015	2,830	3,515
4.27 x 3.66	14' x 12'	5,650	6,220	5,650	6,220	11,000	3,055	3,720
4.88 x 3.66	16' x 12'	6,140	6,750	6,140	6,750	11,850	3,310	4,110
5.49 x 3.66	18' x 12'	6,660	7,325	6,660	7,325	12,620	3,560	4,460
6.10 x 3.66	20' x 12'	7,255	7,980	7,255	7,980	13,560	3,845	4,785

FOR HIGH PITCH VERSION - ADD 10% TO BUILDING AND ANY ADDITIONAL ROOF OPTION



MALVERN HEAVY DUTY APEX			
Width	External		
	Ridge		Eaves
	Low	High	
1.83m (6')	2.33m	2.51m	2.04m
2.44m (8')	2.41m	2.65m	
3.05m (10')	2.43m	2.79m	
3.66m (12')	2.49m	2.94m	
Width	Internal (unlined)		
	Ridge		Eaves
	Low	High	
1.83m (6')	2.20m	2.43m	2.02m
2.44m (8')	2.29m	2.57m	
3.05m (10')	2.29m	2.71m	
3.66m (12')	2.35m	2.85m	

	Roof Options						Floor Bearers	Installation
	Double Glazing	Bitumen Felt Roof Tiles	Onduline Roof	Pressure Treated Slatted Roof	Cedar Slatted Roof	Cedar Shingle Roof		
115	320	330	355	675	880	880	90	125
115	470	475	520	970	1,275	1,275	110	140
115	470	475	545	1,000	1,365	1,365	120	170
230	620	630	700	1,340	1,795	1,795	125	190
230	770	790	850	1,685	2,235	2,235	135	230
345	935	960	1,015	2,030	2,670	2,670	140	250
230	795	815	840	1,630	2,135	2,135	145	295
230	975	1,000	1,015	2,060	2,660	2,660	155	315
345	1,155	1,185	1,185	2,430	3,190	3,190	175	340
450	1,330	1,360	1,380	2,825	3,705	3,705	210	385
450	1,490	1,525	1,620	3,205	4,230	4,230	230	430
230	1,150	1,180	1,185	2,380	3,110	3,110	210	480
345	1,365	1,390	1,415	2,890	3,670	3,670	230	555
450	1,580	1,615	1,620	3,170	4,275	4,275	255	630
450	1,805	1,850	1,865	3,670	4,875	4,875	280	700
450	2,035	2,075	2,090	4,130	5,470	5,470	300	775
345	1,555	1,595	1,620	3,170	4,410	4,410	265	595
450	1,860	1,895	1,895	3,700	4,845	4,845	290	670
450	2,110	2,155	2,180	4,180	5,540	5,540	330	750
450	2,340	2,385	2,510	4,670	6,230	6,230	355	825
450	2,595	2,650	2,785	5,210	6,915	6,915	380	890

Additional Windows	Fixed/Security		Opening	
	Single Glazed	Double Glazed	Single Glazed	Double Glazed
Standard Redwood	120	240	165	285
Standard Pressure Treated	125	250	170	295
Standard Cedar	180	305	230	355
Georgian Redwood	240	-	280	-
Georgian Pressure Treated	245	-	285	-
Georgian Cedar	335	-	380	-

Single Malvern Door or Double Door in lieu of single	
Redwood	365
Pressure Treated/Barnstyle	420
Cedar	545

Additional Window in Door	Single Glazed	Double Glazed
Standard Redwood	120	240
Standard Pressure Treated	125	250
Standard Cedar	180	305
Georgian Redwood	240	-
Georgian Pressure Treated	245	-
Georgian Cedar	335	-

Other Options	1.22m (6')	2.44m (8')	3.05m (10')	3.66m (12')
Redwood Partition	290	410	605	770
Pressure Treated Partition	345	470	700	875
Cedar Partition	680	940	1305	1640

Stable Door Conversion in lieu of standard	160
--	-----

0.23m (9") Wide Shelf	65 per running metre
0.38m (15") Wide Shelf	85 per running metre
0.38m (15") Wide Workbench	85 per running metre
0.61m (24") Wide Workbench	105 per running metre
Guttering per side	65 per running metre
Composite Decking Upgrade	280 per square metre

Hook & Band Hinges	55 per door
Security Pack for Doors	210

Malvern Apex Depth	1.22m (4')	1.83m (6')	2.44m (8')	3.05m (10')	3.66m (12')	4.27m (14')	4.88m (16')	5.49m (18')	6.10m (20')
Georgian Upgrade Single Glazed Windows	155	155	305	305	455	605	605	605	605
Additional 0.91m (3') Logstore	370	475	605	735	855	965	1,105	1,245	1,380

# **SHEDS**

## **MALVERN** **HEAVY DUTY PENT**



12' x 8' Malvern Heavy Duty Pent



10' x 6' Malvern Heavy Duty Pent



10' x 6' Malvern Heavy Duty Pent

## STANDARD FEATURES

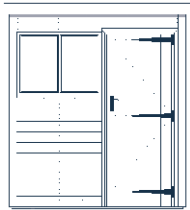
- Front height under 2.5m
- Heavy duty framework throughout
- Additional diagonal framework for extra rigidity and strength
- Heavy duty floor
- Pressure treated floor joists
- Tongue & groove timber roof and floor
- Polyester mineral felt – available in green, black or red
- Fully framed, ledged and braced single door
- 3 lever mortice lock
- 3 heavy duty hinges per door
- Security screws in hinges
- Single glazed 4mm toughened glass
- Black or chrome ironmongery - please specify at time of order
- 0.23m (9") roof overhang to front
- Joinery made fixed and lockable opening windows
- High quality timber treatment applied throughout prior to delivery (excluding pressure treated)
- A wide range of sizes to choose from

## OPTIONS

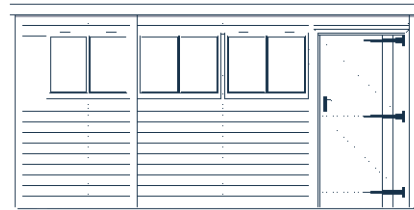
- A choice of Heavy Duty Redwood, Heavy Duty Pressure Treated, Heavy Duty Redwood Barnstyle, Heavy Duty Pressure Treated Barnstyle or Western Red Cedar cladding
- Coloured painted finish – wide selection of colours
- Black highlights – window frames and fascias painted black, no cost upgrade but must be specified on the order
- EPDM rubber roof
- Tongue and groove lining plus insulation
- Internal partition wall
- High level security fixed windows in lieu of opening at no additional cost
- Georgian style windows
- Double glazing (excluding Georgian)
- Window in door, plain or Georgian
- Integral Tidystore conversion
- Integral open sided area
- Composite decking upgrade to open area
- Hook and band hinges
- Security pack including 6 pin lock and security screws
- Guttering and downpipe in a choice of three colours
- Heavy duty workbenches and shelves
- Double door upgrade
- A set of pressure treated floor bearers

# WINDOW AND DOOR CONFIGURATIONS

These layouts can be altered to suit your own individual requirements.



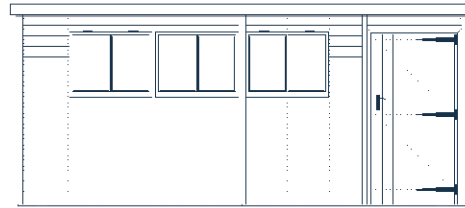
1.83m (6')



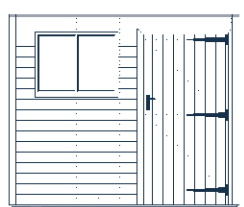
4.27m (14')



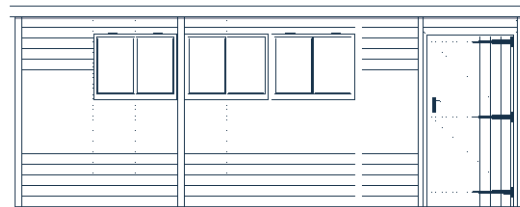
2.13m (7')



4.88m (16')



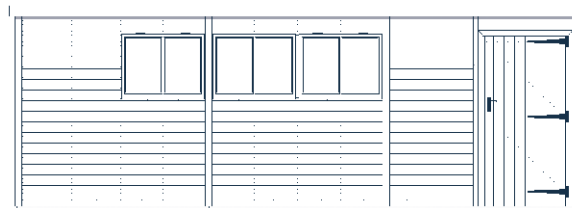
2.44m (8')



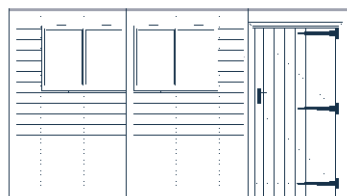
5.49m (18')



3.05m (10')



6.10m (20')



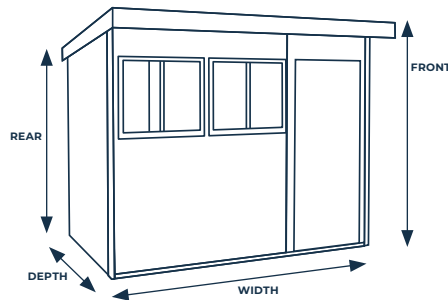
3.66m (12')

# SHEDS

# MALVERN

## HEAVY DUTY PENT

Size		External Cladding				
Size w x d (m)	Size w x d (ft)	19mm Tongue & Groove Redwood	19mm Tongue & Groove Pressure Treated Redwood	23mm Barnstyle Redwood	23mm Barnstyle Pressure Treated Redwood	12mm Tongue & Groove Cedar
1.83 x 1.22	6' x 4'	1,580	1,735	1,580	1,735	3,960
2.13 x 1.52	7' x 5'	1,950	2,150	1,950	2,150	4,715
2.44 x 1.83	8' x 6'	2,265	2,490	2,265	2,490	5,200
3.05 x 1.83	10' x 6'	2,875	3,160	2,875	3,160	6,260
3.66 x 1.83	12' x 6'	3,055	3,365	3,055	3,365	6,715
4.27 x 1.83	14' x 6'	3,595	3,955	3,595	3,955	7,260
4.88 x 1.83	16' x 6'	4,005	4,405	4,005	4,405	7,810
2.44 x 2.44	8' x 8'	2,920	3,215	2,920	3,215	6,385
3.05 x 2.44	10' x 8'	3,405	3,745	3,405	3,745	7,260
3.66 x 2.44	12' x 8'	3,650	4,010	3,650	4,010	7,780
4.27 x 2.44	14' x 8'	4,105	4,515	4,105	4,515	8,570
4.88 x 2.44	16' x 8'	4,480	4,925	4,480	4,925	9,250
5.49 x 2.44	18' x 8'	4,875	5,360	4,875	5,360	9,950
6.10 x 2.44	20' x 8'	5,245	5,770	5,245	5,770	10,650
3.05 x 3.05	10' x 10'	4,070	4,475	4,070	4,475	8,300
3.66 x 3.05	12' x 10'	4,420	4,865	4,420	4,865	8,920
4.27 x 3.05	14' x 10'	4,995	5,490	4,995	5,490	9,830
4.88 x 3.05	16' x 10'	5,445	5,990	5,445	5,990	10,640
5.49 x 3.05	18' x 10'	5,915	6,510	5,915	6,510	11,370
6.10 x 3.05	20' x 10'	6,430	7,075	6,430	7,075	12,130



MALVERN HEAVY DUTY PENT		
Depth	Front Height	Rear Height
1.83m (6')	2.22m	2.02m
2.44m (8')	2.22m	2.02m
3.05m (10')	2.24m	2.04m
Single Door	0.89m wide	



	Coloured Painted Finish	Tongue & Grooved Lining & Insulation	Double Glazing	EPDM Rubber Roof	Floor Bearers	Installation
	1,215	1,165	115	190	90	125
	1,415	1,415	115	270	110	140
	1,635	1,690	115	375	125	190
	1,850	1,985	230	460	135	230
	2,045	2,290	230	545	140	250
	2,285	2,540	345	645	145	270
	2,535	2,805	345	735	155	300
	1,895	2,035	115	495	145	295
	2,100	2,355	230	620	155	315
	2,315	2,635	230	735	175	340
	2,510	2,955	345	855	210	385
	2,705	3,265	345	985	230	430
	2,920	3,550	345	1,100	255	470
	3,145	3,840	345	1,225	280	525
	2,415	2,710	230	770	210	480
	2,575	3,025	230	925	230	555
	2,785	3,515	345	1,075	255	630
	3,000	3,675	345	1,225	280	700
	3,310	3,950	345	1,385	300	775
	3,560	4,190	345	1,540	330	850

Additional Windows	Fixed/Security		Opening	
	Single Glazed	Double Glazed	Single Glazed	Double Glazed
Standard Redwood	120	240	165	285
Standard Pressure Treated	125	250	170	295
Standard Cedar	180	305	230	355
Georgian Redwood	240	-	280	-
Georgian Pressure Treated	245	-	285	-
Georgian Cedar	335	-	380	-

Other Options	1.22m (6')	2.44m (8')	3.05m (10')
Redwood Partition	290	410	605
Pressure Treated Partition	345	470	700
Cedar Partition	680	940	1305

0.23m (9") Wide Shelf	65 per running metre
0.38m (15") Wide Shelf	85 per running metre
0.38m (15") Wide Workbench	85 per running metre
0.61m (24") Wide Workbench	105 per running metre
Guttering per side	65 per running metre
Composite Decking Upgrade	280 per square metre

Single Malvern Door or Double Door in lieu of single	
Redwood	365
Pressure Treated/Barnstyle	420
Cedar	545

Additional Window in Door	Single Glazed	Double Glazed
Standard Redwood	120	240
Standard Pressure Treated	125	250
Standard Cedar	180	305
Georgian Redwood	240	-
Georgian Pressure Treated	245	-
Georgian Cedar	335	-

Stable Door Conversion in lieu of standard	160
--	-----

Hook & Band Hinges	55 per door
Security Pack for Doors	210

Malvern Pent Width	2.44m (8')	3.05m (10')	3.66m (12')	4.27m (14')	4.88m (16')	5.49m (18')	6.10m (20')
Georgian Upgrade Single Glazed Windows	155	305	305	455	455	455	455

Malvern Pent Depth - Integral Tidystore	1.22m (6')	2.44m (8')	3.05m (10')
Redwood	255	335	420
Pressure Treated/Barnstyle	300	395	495
Cedar	675	910	1,180

**SHEDS**

**MALVERN**  
**HEAVY DUTY COMBINATION**



12' x 8' Malvern Heavy Duty Combination



12' x 8' Malvern Heavy Duty Combination



10' x 8' Malvern Heavy Duty Combination

## STANDARD FEATURES

- All ridge heights under 2.5m
- Heavy duty framework throughout
- Additional diagonal framework for extra rigidity and strength
- Heavy duty floor
- Pressure treated floor joists
- Tongue and groove timber roof and floor
- 1.2m (4') integral porch
- Polyester mineral felt – available in green, black or red
- Fully framed, ledged and braced single door
- 3 lever mortice lock
- 3 heavy duty hinges per door
- Security screws in hinges
- Single glazed 4mm toughened glass
- Black or chrome ironmongery - please specify at time of order
- Joinery made fixed and lockable opening windows
- High quality timber treatment applied throughout prior to delivery (excluding pressure treated)
- A wide range of sizes to choose from

## OPTIONS

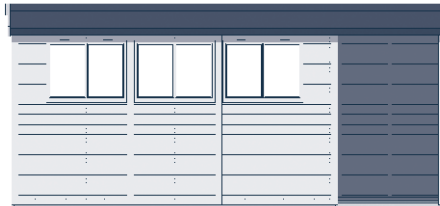
- A choice of Heavy Duty Redwood, Heavy Duty Pressure Treated, Heavy Duty Redwood Barnstyle, Heavy Duty Pressure Treated Barnstyle or Western Red Cedar cladding
- Higher pitch roof
- Coloured painted finish – wide selection of colours
- Black highlights – window frames and fascias painted black, no cost upgrade but must be specified on the order
- Bitumen mineral roof felt tiles, available in green, red or black
- Onduline roof
- Pressure treated slatted roof
- Slate effect roof tiles - a choice of 3 colours available
- Cedar slatted roof
- Pressure treated cedar shingle roof
- Double glazing (excluding Georgian)
- Tongue and groove timber lining plus insulation
- High level security fixed windows in lieu of opening at no additional cost
- Georgian style windows
- Window in door, plain or Georgian
- Hook and band hinges
- Security pack including 6 pin lock and security screws
- Guttering and downpipe in a choice of three colours
- Heavy duty workbenches and shelves
- Heavy duty staging and high level shelving
- A set of pressure treated floor bearers

# WINDOW CONFIGURATIONS

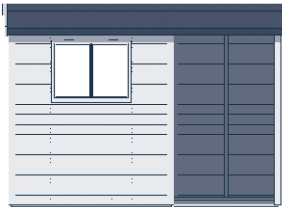
These layouts can be altered to suit your own individual requirements.



2.44m (8')



4.88m (16')



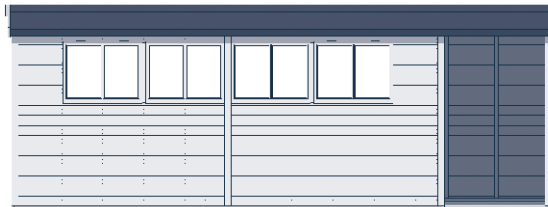
3.05m (10')



5.49m (18')



3.66m (12')



6.10m (20')



4.27m (14')

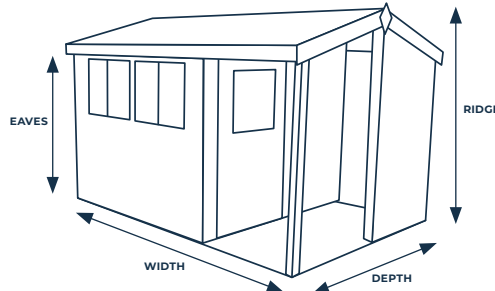
# SHEDS

# MALVERN

## HEAVY DUTY COMBINATION

Size		External Cladding					Coloured Painted Finish	Tongue & Grooved Lining & Insulation
Size w x d (m)	Size w x d (ft)	19mm Tongue & Groove Redwood	19mm Tongue & Groove Pressure Treated Redwood	23mm Barnstyle Redwood	23mm Barnstyle Pressure Treated Redwood	12mm Tongue & Groove Cedar		
2.44 x 1.83	8' x 6'	2,620	2,885	2,620	2,885	5,980	1,635	1,185
3.05 x 1.83	10' x 6'	3,235	3,555	3,235	3,555	7,040	1,850	1,440
3.66 x 1.83	12' x 6'	3,415	3,760	3,415	3,760	7,495	2,045	1,690
4.27 x 1.83	14' x 6'	3,955	4,350	3,955	4,350	8,040	2,285	1,985
4.88 x 1.83	16' x 6'	4,365	4,800	4,365	4,800	8,590	2,535	2,290
3.05 x 2.44	10' x 8'	3,845	4,230	3,845	4,230	8,275	2,100	1,755
3.66 x 2.44	12' x 8'	4,090	4,500	4,090	4,500	8,790	2,315	2,035
4.27 x 2.44	14' x 8'	4,545	5,005	4,545	5,005	9,580	2,510	2,355
4.88 x 2.44	16' x 8'	4,920	5,415	4,920	5,415	10,260	2,705	2,635
5.49 x 2.44	18' x 8'	5,315	5,845	5,315	5,845	10,960	2,920	2,955
6.10 x 2.44	20' x 8'	5,690	6,260	5,690	6,260	11,660	3,145	3,265
3.05 x 3.05	10' x 10'	4,595	5,055	4,595	5,055	9,580	2,415	2,070
3.66 x 3.05	12' x 10'	4,945	5,440	4,945	5,440	10,205	2,575	2,380
4.27 x 3.05	14' x 10'	5,515	6,065	5,515	6,065	11,110	2,785	2,710
4.88 x 3.05	16' x 10'	5,970	6,565	5,970	6,565	11,920	3,000	3,025
5.49 x 3.05	18' x 10'	6,440	7,085	6,440	7,085	12,655	3,310	3,515
6.10 x 3.05	20' x 10'	6,955	7,650	6,955	7,650	13,410	3,560	3,675
3.66 x 3.66	12' x 12'	5,500	6,050	5,500	6,050	11,320	2,830	2,785
4.27 x 3.66	14' x 12'	6,130	6,740	6,130	6,740	12,300	3,055	3,110
4.88 x 3.66	16' x 12'	6,615	7,280	6,615	7,280	13,150	3,310	3,515
5.49 x 3.66	18' x 12'	7,135	7,850	7,135	7,850	13,925	3,560	3,720
6.10 x 3.66	20' x 12'	7,735	8,505	7,735	8,505	14,865	3,845	4,110

FOR HIGH PITCH VERSION - ADD 10% TO BUILDING AND ANY ADDITIONAL ROOF OPTION



MALVERN HEAVY DUTY COMBINATION			
Depth	External		
	Ridge		Eaves
	Low	High	
1.83m (6')	2.33m	2.51m	2.04m
2.44m (8')	2.41m	2.65m	
3.05m (10')	2.43m	2.79m	
3.66m (12')	2.49m	2.94m	
Depth	Internal (unlined)		
	Ridge		Eaves
	Low	High	
1.83m (6')	2.20m	2.43m	2.02m
2.44m (8')	2.29m	2.57m	
3.05m (10')	2.29m	2.71m	
3.66m (12')	2.35m	2.85m	

Double Glazing	Roof Options						Floor Bearers	Installation
	Bitumen Felt Roof Tiles	Onduline Roof	Pressure Treated Slatted Roof	Cedar Slatted Roof	Cedar Shingle Roof	Slate Effect Tiled Roof		
115	620	630	700	1,340	1,795	1,795	125	190
115	770	790	850	1,685	2,235	2,235	135	230
230	935	960	1,015	2,030	2,670	2,670	140	250
230	1,070	1,095	1,185	2,350	3,100	3,100	145	270
345	1,245	1,265	1,365	2,670	3,545	3,545	155	300
115	975	1,000	1,015	2,060	2,660	2,660	155	315
230	1,155	1,185	1,185	2,430	3,190	3,190	175	340
230	1,330	1,360	1,380	2,825	3,705	3,705	210	385
345	1,490	1,525	1,620	3,205	4,230	4,230	230	430
455	1,730	1,765	1,850	3,625	4,745	4,745	255	470
455	1,905	1,945	1,955	4,035	5,265	5,265	280	525
115	1,150	1,180	1,185	2,380	3,110	3,110	210	480
230	1,365	1,390	1,415	2,890	3,670	3,670	230	555
230	1,580	1,615	1,620	3,170	4,275	4,275	255	630
345	1,805	1,850	1,865	3,670	4,875	4,875	280	700
455	2,035	2,075	2,090	4,130	5,470	5,470	300	775
455	2,240	2,295	2,320	4,570	6,070	6,070	330	850
230	1,555	1,595	1,620	3,170	4,260	4,260	265	595
230	1,860	1,895	1,895	3,700	4,845	4,845	290	670
345	2,110	2,155	2,180	4,180	5,540	5,540	330	750
455	2,340	2,385	2,510	4,670	6,230	6,230	355	825
455	2,595	2,650	2,785	5,210	6,915	6,915	380	890

Additional Windows	Fixed/Security		Opening	
	Single Glazed	Double Glazed	Single Glazed	Double Glazed
Standard Redwood	120	240	165	285
Standard Pressure Treated	125	250	170	295
Standard Cedar	180	305	230	355
Georgian Redwood	240	-	280	-
Georgian Pressure Treated	245	-	285	-
Georgian Cedar	335	-	380	-

Single Malvern Door or Double Door in lieu of single	
Redwood	365
Pressure Treated/Barnstyle	420
Cedar	545

Additional Window in Door	Single Glazed	Double Glazed
Standard Redwood	120	240
Standard Pressure Treated	125	250
Standard Cedar	180	305
Georgian Redwood	240	-
Georgian Pressure Treated	245	-
Georgian Cedar	335	-

Other Options	1.22m (6')	2.44m (8')	3.05m (10')	3.66m (12')
Redwood Partition	290	410	605	770
Pressure Treated Partition	345	470	700	875
Cedar Partition	680	940	1305	1640

Stable Door Conversion in lieu of standard	160
--	-----

0.23m (9") Wide Shelf	65 per running metre
0.38m (15") Wide Shelf	85 per running metre
0.38m (15") Wide Workbench	85 per running metre
0.61m (24") Wide Workbench	105 per running metre
Guttering per side	65 per running metre
Composite Decking Upgrade	280 per square metre

Hook & Band Hinges	55 per door
Security Pack for Doors	210

Malvern Heavy Duty Combination Width	2.44m (8')	3.05m (10')	3.66m (12')	4.27m (14')	4.88m (16')	5.49m (18')	6.10m (20')
Georgian Upgrade Single Glazed Windows	155	155	305	305	455	605	605

# SHEDS

## MALVERN HEAVY DUTY CORNER



8' x 8' Malvern Heavy Duty Corner



## STANDARD FEATURES

---

- Heavy Duty Framework throughout
- All ridge heights under 2.5m
- 0.15m (6") roof overhang to front and two sides
- Heavy duty floor
- Black or chrome ironmongery - please specify at time of order
- Fully framed ledged and braced single door
- 3 lever mortice lock
- 3 heavy duty hinges to the door
- Single glazed 4mm toughened glass
- Tongue and groove timber roof and floor
- Polyester mineral felt – available in green, black or red
- High quality timber treatment applied throughout prior to delivery (excluding pressure treated)
- A wide range of sizes to choose from

## OPTIONS

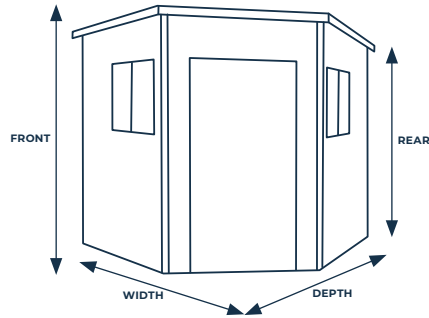
---

- A choice of Heavy Duty Redwood, Heavy Duty Pressure Treated, Heavy Duty Redwood Barnstyle, Heavy Duty Pressure Treated Barnstyle or Western Red Cedar
- Coloured painted finish – a wide selection of colours
- Black highlights – window frames and fascias painted black, no cost upgrade but must be specified on the order
- EPDM rubber roof
- Tongue and groove timber lining and insulation
- Georgian style windows
- Window in door, plain or Georgian
- High level security fixed windows in lieu of opening at no additional cost
- Double glazing (except Georgian)
- Hook and band hinges
- Security pack including 6 pin lock and security screws
- Workbenches and shelves
- A set of pressure treated floor bearers

# SHEDS

## MALVERN HEAVY DUTY CORNER

Size		External Cladding				
Size d x w (m)	Size d x w (ft)	19mm Tongue & Groove Redwood	19mm Tongue & Groove Pressure Treated Redwood	23mm Barnstyle Redwood	23mm Barnstyle Pressure Treated Redwood	12mm Tongue & Groove Cedar
2.13 x 2.13	7' x 7'	2,860	3,145	2,860	3,145	6,325
2.44 x 2.44	8' x 8'	3,405	3,745	3,405	3,745	7,260
2.74 x 2.74	9' x 9'	3,995	4,395	3,995	4,395	8,180
3.05 x 3.05	10' x 10'	4,540	5,000	4,540	5,000	9,105



MALVERN HEAVY DUTY CORNER		
	Front Height	Rear Height
All sizes	2.29m	1.86m
Single Door		0.89m wide

Coloured Painted Finish	Tongue & Grooved Lining & Insulation	Double Glazing	EPDM Rubber Roof	Floor Bearers	Installation
1,645	1,735	230	380	135	195
1,895	2,035	230	495	140	295
2,130	2,355	230	625	170	390
2,415	2,710	230	770	200	480

Additional Windows	Fixed/Security		Opening	
	Single Glazed	Double Glazed	Single Glazed	Double Glazed
Standard Redwood	120	240	165	285
Standard Pressure Treated	125	250	170	295
Standard Cedar	180	305	230	355
Georgian Redwood	240	-	280	-
Georgian Pressure Treated	245	-	285	-
Georgian Cedar	335	-	380	-

Additional Window in Door	Single Glazed	Double Glazed
Standard Redwood	120	240
Standard Pressure Treated	125	250
Standard Cedar	180	305
Georgian Redwood	240	-
Georgian Pressure Treated	245	-
Georgian Cedar	335	-

Stable Door Conversion in lieu of standard	160
--	-----

Malvern Heavy Duty Corner	2.13m (7')	2.44m (8')	2.74m (9')	3.05m (10')
Georgian Upgrade Single Glazed Windows	305	305	305	305

Hook & Band Hinges	55 per door
Security Pack for Doors	210

# SHEDS

## MALVERN POTTING SHED



The potting shed is built to the same timber specifications as our Malvern Heavy Duty Shed range.

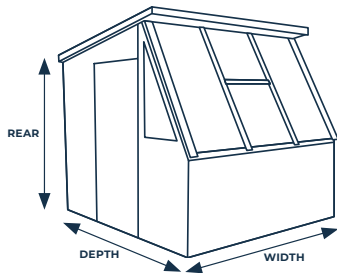
A pretty and practical building that combines growing space with a storage shed. Many of the options on the Malvern Shed range are also available with our potting sheds.



8' x 6' Potting Shed

## STANDARD FEATURES

- Heavy duty framework throughout
- Heavy duty floor
- Tongue and groove timber roof and floor
- Polyester mineral felt - available in green, black or red
- Fully framed, ledged and braced door
- 3 heavy duty hinges per door
- One opening vent window to the front
- Side windows
- 4mm toughened glass
- Black or chrome ironmongery - please specify at time of order
- Front roof overhang
- High quality timber treatment applied throughout prior to delivery (excluding pressure treated)
- Six sizes to choose from



POTTING SHED		
	Front Height	Rear Height
All sizes	2.29m	1.86m
Single Door		0.89m wide

## OPTIONS

- A choice of Heavy Duty Redwood, Heavy Duty Pressure Treated or Western Red Cedar cladding
- Coloured painted finish - wide selection of colours
- Stable door
- Heavy duty staging under windows
- Glass to ground glazing
- Guttering and downpipe in a choice of three colours
- A set of pressure treated floor bearers



8' x 6' Potting Shed Glass to Ground

Size		External Cladding				Roof Options			Floor Bearers	Installation
Size w x d (m)	Size w x d (ft)	19mm Tongue & Groove Redwood	19mm Tongue & Groove Pressure Treated Redwood	12mm Tongue & Groove Cedar	Coloured Painted Finish	Redwood/Pressure Treated	Cedar			
1.83 x 1.83	6' x 6'	2,760	3,170	4,055	1,440	435	960	125	210	
2.44 x 1.83	8' x 6'	3,000	3,470	4,385	1,635	465	1,010	135	225	
2.13 x 2.13	7' x 7'	3,110	3,585	4,555	1,645	450	985	140	225	
2.44 x 2.13	8' x 7'	3,370	3,850	4,885	1,750	465	1,010	140	240	
2.44 x 2.44	8' x 8'	3,635	4,160	5,185	1,895	465	1,010	145	255	
3.05 x 2.44	10' x 8'	4,340	4,995	6,105	2,100	590	1,315	155	385	

	Redwood	Pressure Treated	Cedar
0.64m (25") Wide Staging per running metre	110	120	200

Additional Features	
Stable Door Conversion in lieu of standard	160

Additional Opening Window in rear or end	
Redwood	165
Pressure Treated	170
Cedar	230

0.23m (9") Wide Shelf	65 per running metre
0.38m (15") Wide Shelf	85 per running metre
0.38m (15") Wide Workbench	85 per running metre
0.61m (24") Wide Workbench	105 per running metre

# SHEDS

# VICTORIAN GREENHOUSE



10' 3" x 7' 9" Victorian



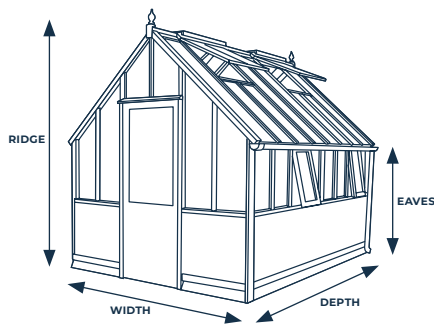
10' 3" x 7' 9" Victorian

Constructed using clear grade western red cedar (*Thuja Plicata*) throughout, providing natural durability and resistance to rot. Handcrafted for over 50 years by our experienced joiners in Worcestershire, using time-honoured techniques creating precision mortise and tenon joints to give our Victorian greenhouse strength and integrity.

The Victorian greenhouse features cedar clad board panels all round, offering greater heat insulation and increased greenhouse strength. Other key features are the solid brass ironmongery, automatic roof vents, lockable door, guttering and downpipes to both sides. Staging and shelving can be added along with one of our many durable exterior paint finishes.

## STANDARD FEATURES

- Cedar timber throughout
- Boarded base panels all round
- Automatic roof vents
- Lockable single door opening in hinged on right
- Solid brass or chrome ironmongery - please specify at time of order
- Guttering and downpipes to both sides
- Secured to base
- High quality timber treatment applied throughout prior to delivery
- A wide range of sizes to choose from



VICTORIAN		
Building	Ridge Height	Eaves Height
1.93m (6' 4")	2.29m	1.58m
2.39m (7' 9")	2.83m	1.58m

## OPTIONS

- Comprehensive paint system to protect and decorate available in a variety of colours
- Coloured painted finish - wide selection of colours
- Staging
- Shelving
- Door can be hinged on the left or made to open outwards



10' 3" x 7' 9" Victorian



10' 3" x 7' 9" Victorian

Size d x w (m)	Size d x w (ft)	Price	Coloured Painted Finish	21" (533mm) Staging	12" (305mm) Shelving	Installation	Roof Vents/ Side Vents
1.60 x 1.93	5'3" x 6'4"	5,435	1,100	350	225	420	2/2
2.39 x 1.93	7'10" x 6'4"	6,255	1,635	520	350	455	2/2
3.12 x 1.93	10'3" x 6'4"	7,630	1,850	665	420	525	4/4
3.89 x 1.93	12'9" x 6'4"	8,845	2,045	820	525	585	4/4
4.65 x 1.93	15'3" x 6'4"	9,560	2,535	985	600	660	6/6

Size d x w (m)	Size d x w (ft)	Price	Coloured Painted Finish	25" (635mm) Staging	12" (305mm) Shelving	Installation	Roof Vents/ Side Vents
1.60 x 2.36	5'3" x 7'9"	6,405	1,635	355	225	455	2/2
2.39 x 2.36	7'10" x 7'9"	7,595	1,895	520	350	525	2/2
3.12 x 2.36	10'3" x 7'9"	8,670	2,165	675	420	595	4/4
3.89 x 2.36	12'9" x 7'9"	10,485	2,315	835	525	685	4/4
4.65 x 2.36	15'3" x 7'9"	11,495	2,705	1,005	600	785	6/6

# SHEDS

# BEWDLEY



8' x 8' Bewdley Apex with double doors



8' x 6' Bewdley Apex

**Handmade in Worcestershire, the Bewdley traditional shed, a classic garden shed, is available in both apex and pent style roof options and the very handy and practical corner shed.**

Our traditional Bewdley shed is also built on heavy duty framework, ensuring rigidity in its design, and includes standard features such as fully framed, ledged and braced doors with a lockable rim lock and opening windows.

All of our sheds have solid timber roofs and floors fitted as standard.





8' x 6' Bewdley Apex



8' x 6' Bewdley Pent



8' x 6' Bewdley Pent

# SHEDS

# BEWDLEY

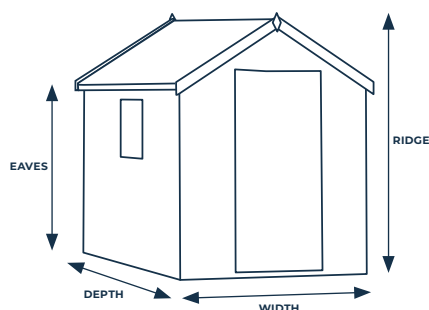
## BEWDLEY APEX

### STANDARD FEATURES

- 13mm redwood cladding
- Heavy duty framework throughout
- All ridge heights under 2.5m
- Single door
- Black ironmongery
- Opening window(s) (quantity dependant on size and model)
- Framed ledged and braced door
- Lockable rimlock and handle door catch
- 3 door hinges per door for extra strength
- Turn button top and bottom of door
- Tongue and groove timber roof and floor
- Polyester mineral felt - available in green, black or red
- Toughened glass
- High quality timber treatment applied throughout prior to delivery
- A wide range of sizes to choose from

### OPTIONS

- Double doors on 8' wide models
- Additional fixed and opening windows
- Workbenches and shelves
- A set of pressure treated floor bearers



BEWDLEY APEX		
Width	Ridge Height	Eaves Height
1.22m (4')	2.05m	1.73m
1.52m (5')	2.12m	1.73m
1.83m (6')	2.19m	1.73m
2.44m (8')	2.31m	1.73m
Single Door	<b>1.22m wide (4')</b>	0.66m wide
	<b>Other widths</b>	0.89m wide
Optional Double Doors		1.50m wide

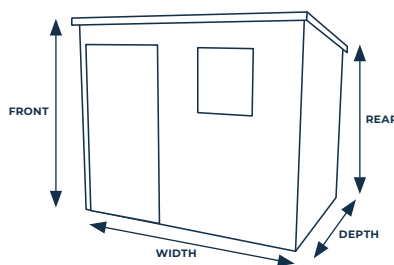
## BEWDLEY PENT

### STANDARD FEATURES

- 13mm redwood cladding
- Heavy duty framework throughout
- All ridge heights under 2.5m
- Single door
- Black ironmongery
- Opening window(s) (quantity dependant on size and model)
- Framed ledged and braced door
- Lockable rimlock and handle door catch
- 3 door hinges per door for extra strength
- Turn button top and bottom of door
- Tongue and groove timber roof and floor
- Polyester mineral felt - available in green, black or red
- Toughened glass
- High quality timber treatment applied throughout prior to delivery
- A wide range of sizes to choose from

### OPTIONS

- Additional fixed and opening windows
- Pent sheds have four possible door positions: Left of front, right of front, left hand end and right hand end
- Workbenches and shelves
- A set of pressure treated floor bearers



BEWDLEY PENT		
Width	Front Height	Rear Height
1.22m (4')	2.12m	1.86m
1.52m (5')	2.12m	1.86m
1.83m (6')	2.12m	1.86m
2.44m (8')	2.12m	1.86m
Single Door	<b>1.83m wide (6')</b>	0.66m wide
	<b>Other widths</b>	0.89m wide

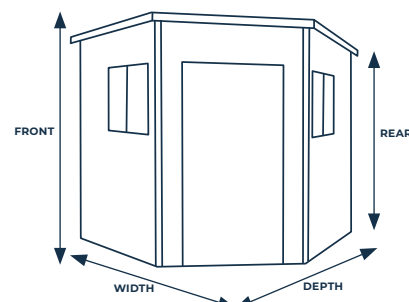
## BEWDLEY CORNER

### STANDARD FEATURES

- 13mm redwood cladding
- Heavy duty framework throughout
- All ridge heights under 2.5m
- Single door
- Black ironmongery
- Opening window either side of door
- Framed ledged and braced door
- Lockable rimlock and handle door catch
- 3 door hinges per door for extra strength
- Turn button top and bottom of door
- Tongue and groove timber roof and floor
- Polyester mineral felt - available in green, black or red
- Toughened glass
- High quality timber treatment applied throughout prior to delivery
- A wide range of sizes to choose from

### OPTIONS

- Additional fixed and opening windows
- Workbenches and shelves
- A set of pressure treated floor bearers



BEWDLEY CORNER		
	Front Height	Rear Height
All sizes	2.29m	1.86m
Single Door		0.89m wide

## BEWDLEY APEX

Size d x w (m)	Size d x w (ft)	13mm Tongue & Groove Redwood	Floor Bearers	Installation	No. of Windows
1.22 x 1.22	4' x 4'	690	85	110	1
1.83 x 1.22	6' x 4'	860	90	125	1
2.44 x 1.22	8' x 4'	1,000	110	140	1
2.13 x 1.52	7' x 5'	1,010	110	140	1
1.83 x 1.83	6' x 6'	1,035	120	140	1
2.44 x 1.83	8' x 6'	1,150	125	175	1
3.05 x 1.83	10' x 6'	1,450	135	210	2
2.44 x 2.44	8' x 8'	1,510	145	215	1
3.05 x 2.44	10' x 8'	1,865	155	255	2
3.66 x 2.44	12' x 8'	2,070	175	305	2

Additional Features		0.23m (9") Wide Shelf	65 per running metre
Extra fixed window	45	0.38m (15") Wide Shelf	85 per running metre
Extra opening window	90	0.38m (15") Wide Workbench	85 per running metre
Double door upgrade on 2.44m (8') wide Apex model	145	0.61m (24") Wide Workbench	105 per running metre

## BEWDLEY PENT

Size w x d (m)	Size w x d (ft)	13mm Tongue & Groove Redwood	Floor Bearers	Installation	No. of Windows	
					Door in front	Door in end
1.22 x 1.22	4' x 4'	740	85	110	-	1
1.83 x 1.22	6' x 4'	930	90	125	1	1
2.44 x 1.22	8' x 4'	1,075	110	140	1	1
2.13 x 1.52	7' x 5'	1,085	110	140	1	1
1.83 x 1.83	6' x 6'	1,095	120	140	1	1
2.44 x 1.83	8' x 6'	1,210	125	175	1	1
3.05 x 1.83	10' x 6'	1,545	135	210	1	2
2.44 x 2.44	8' x 8'	1,595	145	215	1	1
3.05 x 2.44	10' x 8'	1,970	155	255	1	2
3.66 x 2.44	12' x 8'	2,240	175	305	1	2

Additional Features		0.23m (9") Wide Shelf	65 per running metre
Extra fixed window	45	0.38m (15") Wide Shelf	85 per running metre
Extra opening window	90	0.38m (15") Wide Workbench	85 per running metre
		0.61m (24") Wide Workbench	105 per running metre

## BEWDLEY CORNER

Size w x d (m)	Size w x d (ft)	13mm Tongue & Groove Redwood	Floor Bearers	Installation
2.13 x 2.13	7' x 7'	1,625	140	175
2.44 x 2.44	8' x 8'	1,895	145	215

Additional Features		0.23m (9") Wide Shelf	65 per running metre
Extra fixed window	45	0.38m (15") Wide Shelf	85 per running metre
Extra opening window	90	0.38m (15") Wide Workbench	85 per running metre
		0.61m (24") Wide Workbench	105 per running metre

# GLOSSARY OF TERMS

## COLOURED PAINTED FINISH

A comprehensive paint system is applied prior to the building leaving the factory. The paint system comprises of an initial undercoat and a further top coat of your chosen colour.

## HIGHER PITCHED ROOF

For those that require extra internal height.

## TONGUE & GROOVE LINING AND INSULATION

Building is internally lined with foil back bubble insulation and covered with redwood tongue and groove matchboard.

## BITUMEN FELT TILES

Roof is covered with tile effect heavy duty felt tiles.

## SLATTED ROOF

An aesthetic roof made with featheredged pressure treated redwood or Western Red cedar boards to enhance the appearance of your building and provide added protection to the roofing felt beneath.

## CEDAR SHINGLE ROOF

Western Red cedar shingles fixed to pressure treated joists to enhance the appearance of your building and provide added protection to the roofing felt beneath.

## EPDM RUBBER ROOF

A maintenance free synthetic rubber membrane covering the roof as an alternative to roofing felt.

## SLATE EFFECT ROOF TILE

Slate effect roof tile is a synthetic roof tile which emulates the appearance of natural slates and has a long life span with no maintenance.

## GUTTERING

Guttering is available in a choice of three colours.

## INTEGRAL OPEN SIDED AREA

Malvern Sheds (excluding Corner) can be divided into rooms with an open space decking area. Timber decking is used for this open area, with composite decking available as an upgrade.

## COMPOSITE DECKING

A high density, heavy duty and weather resistant wood composite.

## HEAVY DUTY FLOOR UPGRADE

The heavy duty floor is a 19mm Heavy Duty Redwood and fitted as standard throughout excluding the Bewdley sheds and Victorian.

## BLACK OR CHROME IRONMONGERY

Substitute ironmongery for either black or chrome to suit your requirements.

## A SET OF FLOOR BEARERS

Floor Bearers are 45 x 45mm (2" x 2") pressure treated lengths of timber which run in an opposite direction to the floor joists making a crisscross formation, allowing air circulation and ventilation to your garden building, taking away direct contact from the base and helps prevent damp from attacking the timbers.

BEWDLEY DOOR OPENINGS (W X H)	
1.22m (4') wide Apex	0.66m x 1.63m
1.52m (5') wide Apex	0.89m x 1.63m
1.83m (6') wide Pent	0.66m x 1.75m
All other Single Doors	0.89m x 1.75m
Double Doors on 2.44m (8') Apex	1.50m x 1.75m

VICTORIAN DOOR OPENINGS (W X H)	
Single Door	0.76m x 1.98m

WALL THICKNESS	
Redwood Standard Cladding	13mm
Cedar Cladding	12mm
Barnstyle Cladding	8-23mm
Redwood & Pressure Treated Heavy Duty Cladding	19mm
Framing	45mm
Tongue and Groove Lining	12mm
Skirting	12mm

MALVERN DOOR OPENINGS (W X H)	
1.22m (4') wide Apex	0.68m x 1.75m
1.52m (5') wide Apex	0.89m x 1.75m
All other Apex Doors	0.89m x 1.85m
Apex Narrow Double Doors	1.37m x 1.85m
Apex Wide Double Doors	1.77m x 1.85m
Reverse Apex, Pent and Potting Shed	0.89m x 1.75m
Reverse Apex and Pent Narrow Double Doors	1.37m x 1.75m
Reverse Apex and Pent Wide Double Doors	1.77m x 1.75m

FLOOR THICKNESS	
Standard Floor	13mm
Heavy Duty Floor	19mm
Pressure Treated Joists	45mm

# CLADDING OPTIONS

## STANDARD REDWOOD

13mm tongue and groove cladding.

## HEAVY DUTY REDWOOD

19mm tongue and groove cladding. Most popular option.

## HEAVY DUTY PRESSURE TREATED

19mm Redwood treated under high pressure with the aim of making it more durable and resistant to decay, insects, and other environmental factors. (We don't recommend paint as an option with pressure treated timber).

## REDWOOD BARNSTYLE

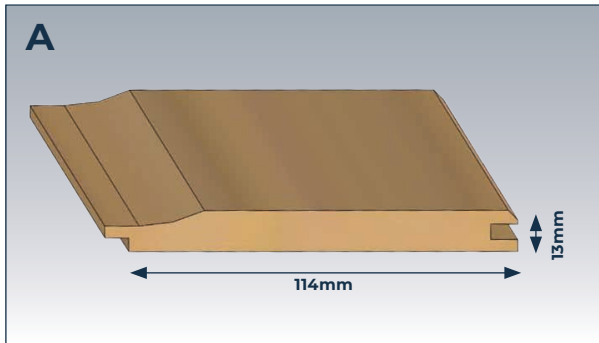
23mm Barnstyle mimics the traditional horizontal board-and-batten design commonly found on barns. It's characterised by wide, overlapping boards with small gaps between them, giving it a rustic & charming appearance. Barnstyle can be painted.

## PRESSURE TREATED BARNSTYLE

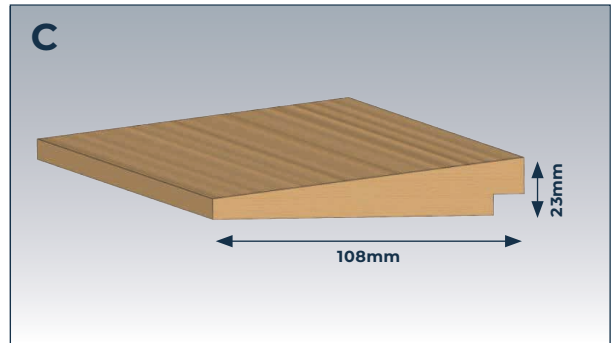
23mm Redwood treated under high pressure, traditional horizontal board-and-batten design.

## STANDARD CEDAR

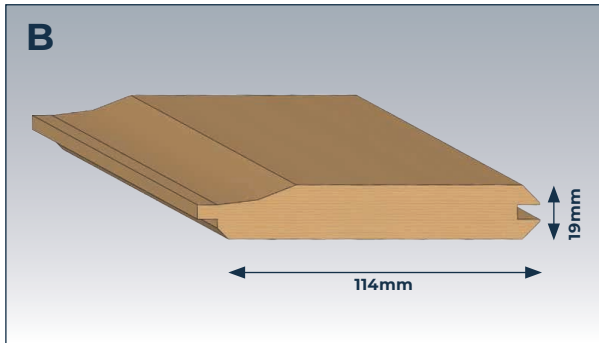
12mm Western Red Cedar, sourced from Canada.



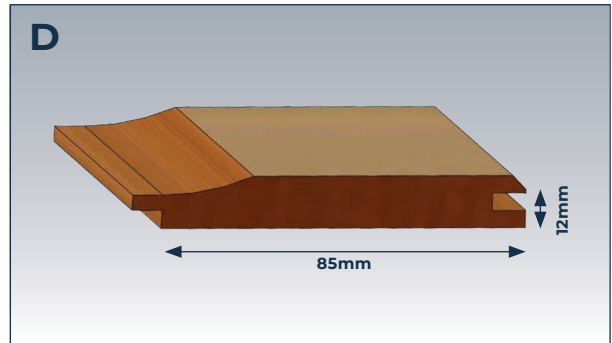
A. 13mm Standard Redwood



C. 23mm Redwood Barnstyle



B. 19mm Heavy Duty Redwood



D. 12mm Standard Cedar

# Important Point

to note

All of our Sheds, Workshops, Potting Sheds and Greenhouses come with a comprehensive guarantee from a company that has been manufacturing and installing buildings for over 50 years.

Our buildings have a 10 year structural guarantee which includes rot and decay. All other workmanship and materials are guaranteed for a minimum of 2 years. Full details are provided in our guarantee guidelines available on request. Glass is only guaranteed for a period of three days from the date of delivery.

Our recommendations are that all timber garden structures require ongoing maintenance following installation. Cedar, redwood & pressure treated redwood require annual timber treatment to be applied, ideally prior to the colder wetter months for added protection. We recommend all spray painted buildings are maintained on an annual basis, inspect the painted areas on the building, checking for any areas where the paint finish may be starting to deteriorate over time, peeling or flaking and repaint where necessary. A full guide of maintenance guidelines are available on request.

All base work is the responsibility of the customer, as is the safe securing of the building once installed, excluding cedar victorian. We require a level solid base, either paving slabs, decking or concrete upon which to install your building. In the event of a base failure, it is the customers responsibility to accept delivery of the building safely and store appropriately.

Please allow as much room as possible around the building for our fitters to work during installation, a minimum of 450mm. If this is not possible please contact the office to discuss.

Our installers will need clear access to carry building sections from the vehicle to your prepared base, with no height restrictions or tight, sharp corners to negotiate.

Our installers cannot lift sections over 1.22m in height or over buildings such as garages. If the only access is through the house, a straight run is required and many sections will not pass through doorways. Please advise us in advance if there are any difficulties regarding access.

Always make allowance for any roof overhang when buildings have to go into confined spaces.

All redwood and cedar sheds have redwood roofs and floors. Cedar buildings have cedar windows, doors and external cladding only i.e. they have redwood framing, floors, roofs and open areas. All pressure treated sheds are pressure treated throughout.

Bewdley ironmongery is black. Malvern ironmongery is black or chrome as standard and this must be specified on order. Victorian Greenhouse ironmongery is brass or chrome but must be specified at time of ordering.

All building dimensions shown in this brochure are approximate, based on floor sizes.

All timber used in the construction of our buildings originates from sustainable forests.

As it is our policy to continually improve products, methods and materials, we reserve the right to change specifications from time to time, we will not make any significant variations without your agreement.

All images and descriptions are for illustration purposes only and are not always standard specification.

All building sizes are approximate and for guidelines only. All timber measurements, if stated, are finished sizes only i.e. after machining. Please note that finished sizes can vary by plus or minus 1mm.

We strongly advise that you visit one of our showrooms to view the range of buildings and finishes.

# PAINT & FINISH OPTIONS



The swatches are for illustration purposes only as the printing process may not allow an accurate colour representation of paint and stain based finishes. We advise when selecting a final colour choice to request a painted timber sample prior to doing so or to visit your local showroom.

\*Please note painted MDF colour options are only available in these colours.

# Visit a Showsite



Visit one of our showsites to explore a range of **premium garden buildings** and **luxury retreats**.

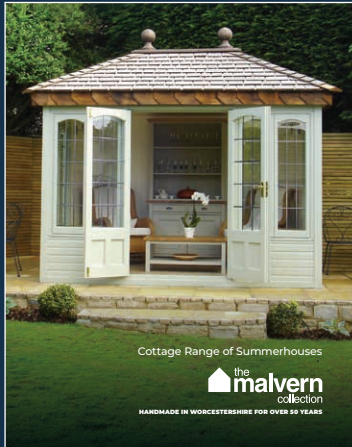
**SHOWSITES NATIONWIDE**



A stone arch bridge spans a river, with buildings and trees visible in the background under a blue sky with clouds. The bridge has a decorative railing and is supported by several stone arches. The water reflects the bridge and the surrounding greenery.

**“Quality garden  
buildings, handmade  
in Worcestershire for  
over 50 years”**

Other ranges in our collection



Cottage Range of Summerhouses



Garden Studios



Garden Rooms & Offices

**QUALITY GARDEN ROOMS & BUILDINGS**  
Manufactured and installed by The Malvern Collection Ltd.

All prices are in (£) Pound Sterling and include VAT and delivery to mainland England, Wales and Scotland\* up to the Caledonian Canal.

\*Restrictions may apply.